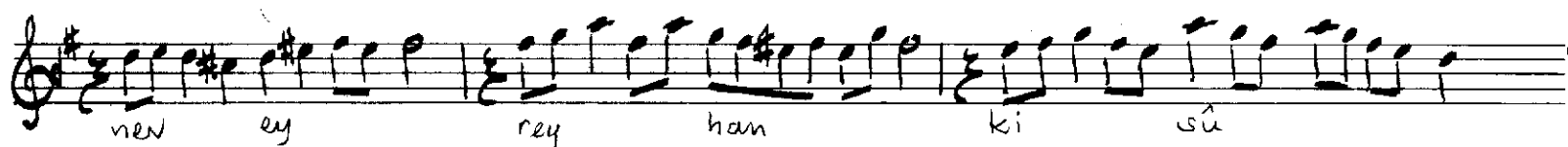
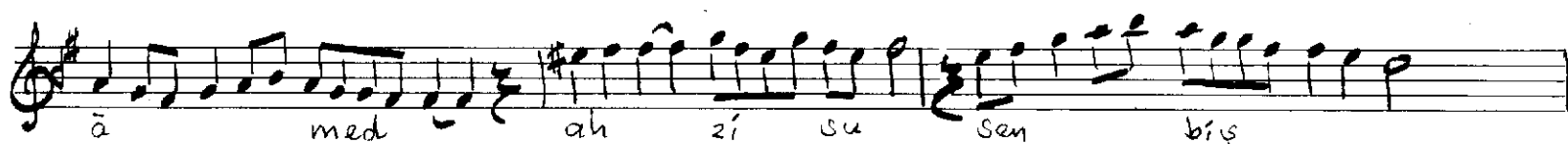
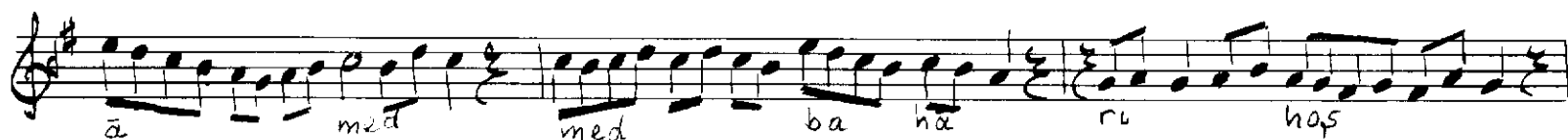
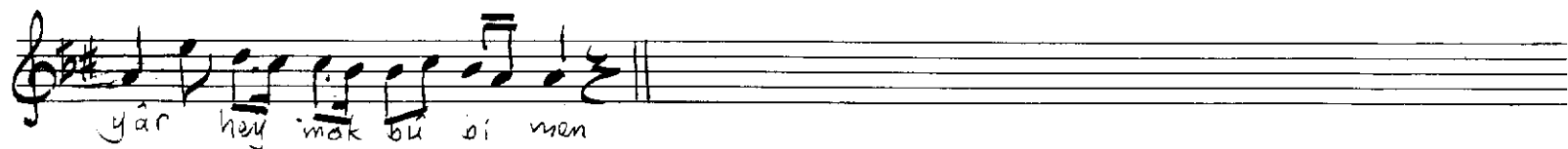


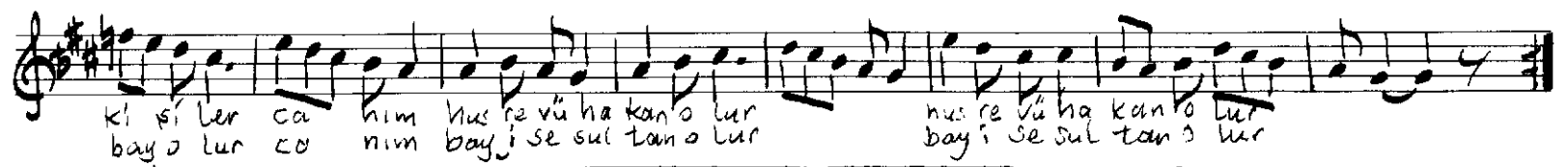
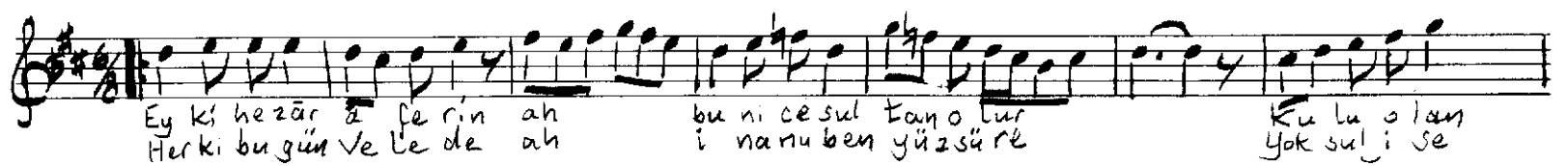
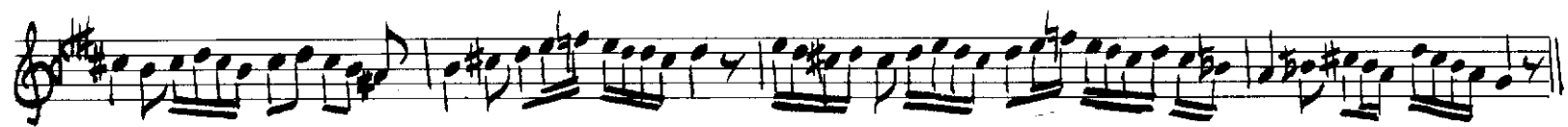
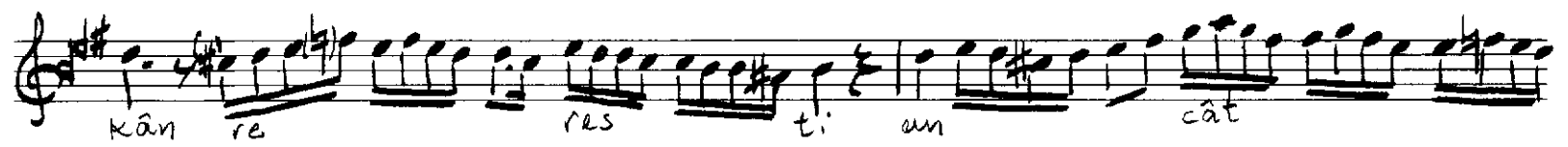
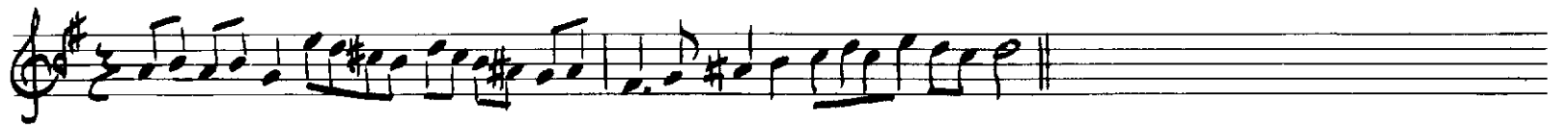
FERAHNÂK ÂYİN-İ ŞERİF

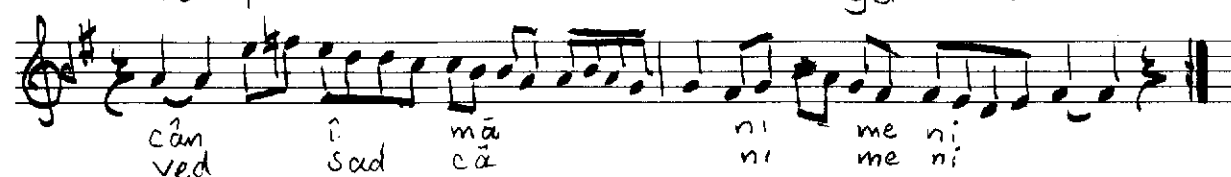
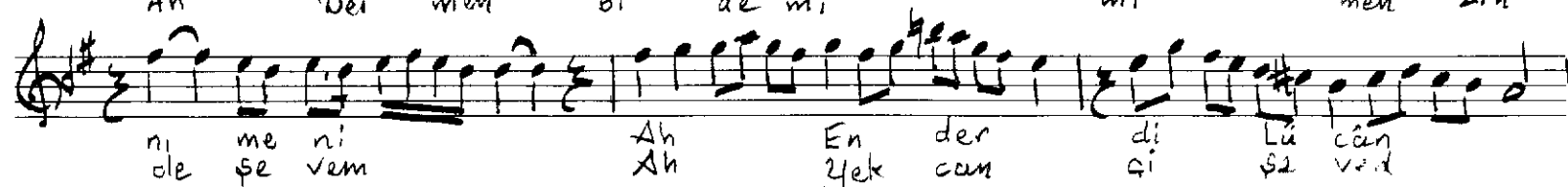
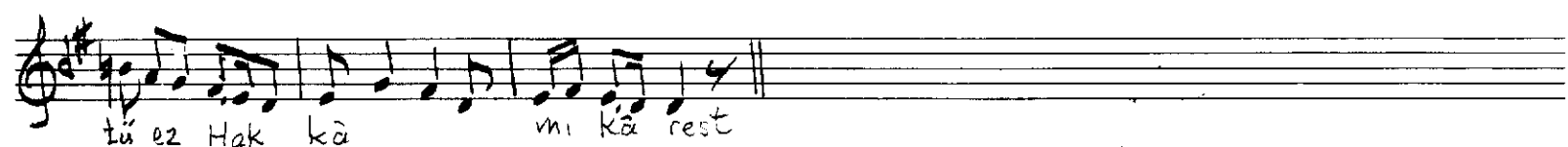
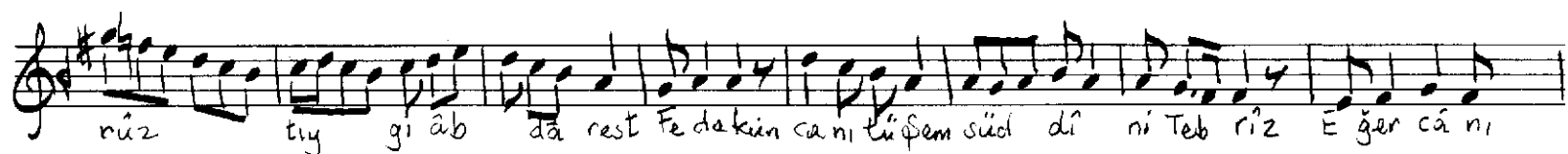
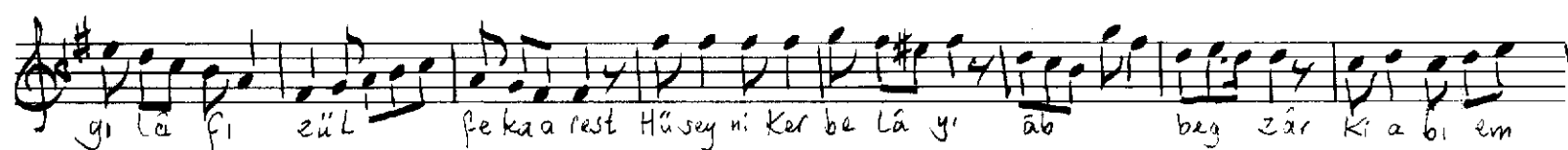
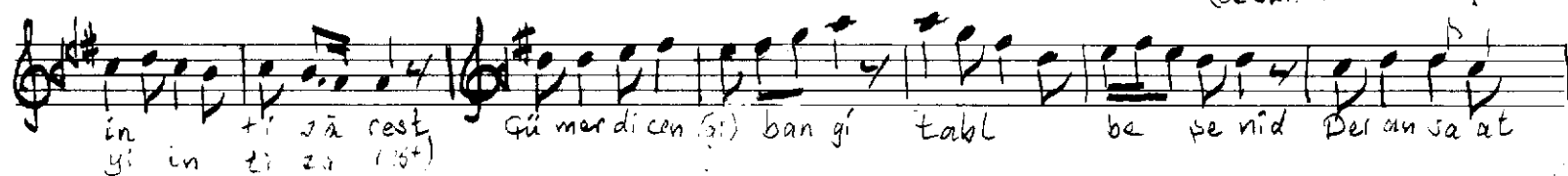
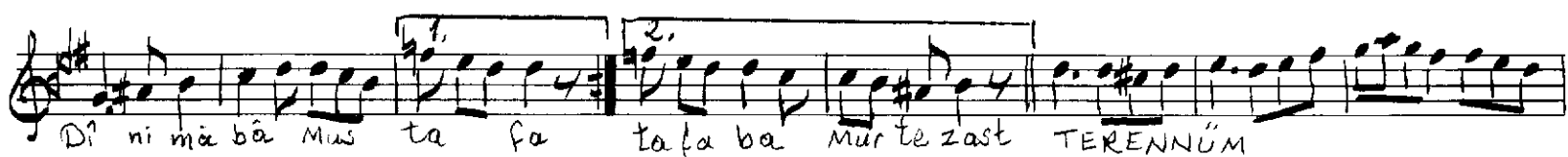
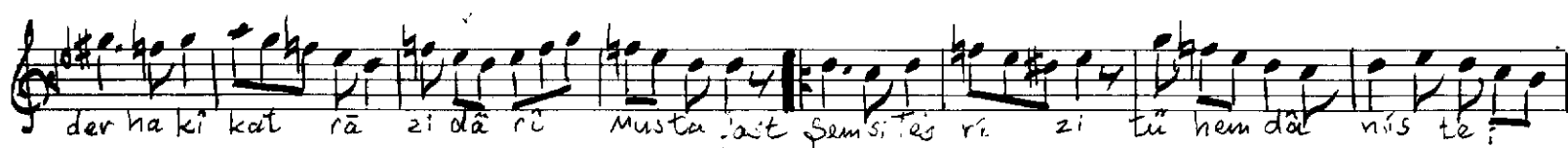
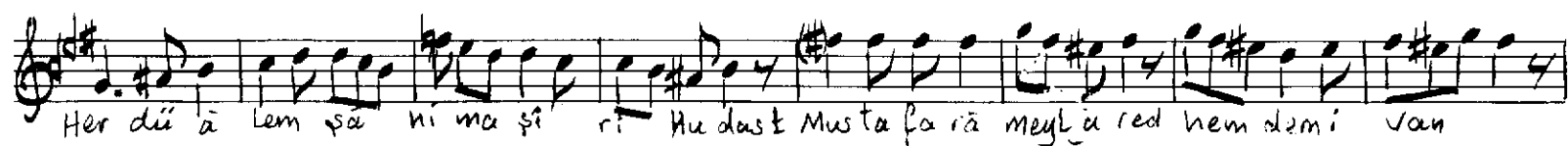
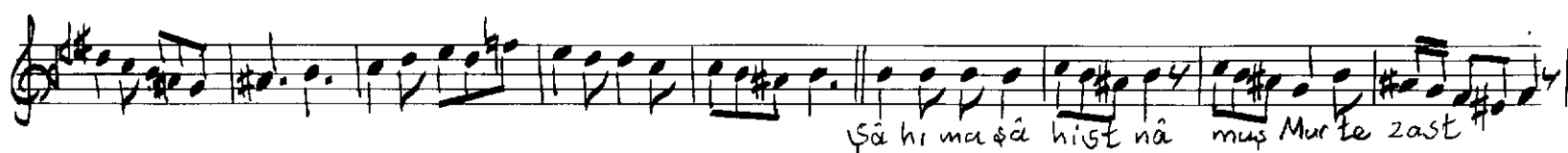
Sermüezzîn Rifat B.

1. ci Selâm

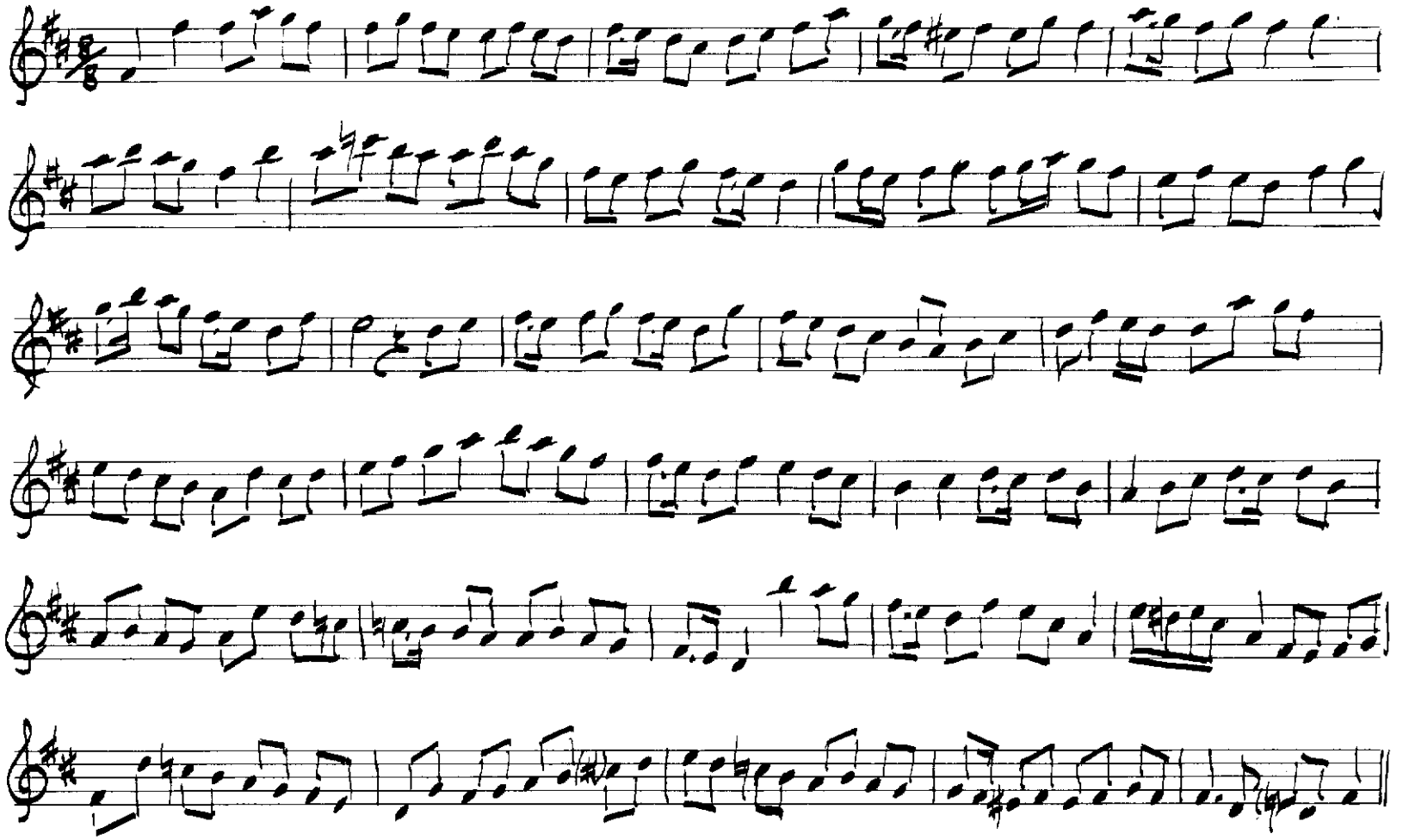
mā rā zi aḡ ki cā nān es rā ri dila yā nest hey yār
 Ger qı ber eh lî sū rel mā nā yî an nî hā nest hey hey yār
 pî ri men Ger zankı mer di rā hî hā hî ce mā lî cā nān
 hey yār Ez sîd ki dîl ta leb kün çî cā yî imtî hā nest
 hey hey yār pî ri men Ey can cā kî nas rûl lah
 vey meş a le i yā sîn hey yār Yâ Rab çî se buk rā hî
 ber feş mü se rem be ne şîn hey hey yār pî ri men
 Ey tâ bi hū ner men di mî rā cî hî red men di hey yār
 Tâ rif ne mî bā yed şûn cām le tu yî ta yîn hey hey yār
 pî ri men Dâş der mehtab dî dam meclî sî ez dus Eî mest
 hey yār Tîf hî men tû pî ri mes tu mû rî bî tan bur mest
 hey hey yār pî ri men Mā hî dā de a su man rā
 cû' a i zâncâ mi may hey yār Mā hî mest tu mārî zî
 Sa ye mest tu nâ ri mest hey hey yār pî ri men







SON PEŞREV



SON YÜRÜK SEMÂ?

